

# The first ...

Wilmington Vascular Center has the distinction of being one of the nation's first ICAVL accredited vascular labs, and the first in Wilmington. To earn this distinction, the lab undergoes a rigorous evaluation by the ICAVL accreditation board. Only those labs that meet the highest standards for compliance and accuracy earn this accreditation.



## Wilmington Vascular Center

at Wilmington Surgical Associates

Ellis A. Tinsley, Jr., MD, FACS  
Mark F. Medley, MD, FACS  
Gregory G. Bebb, MD, FACS  
Thomas D. Eskew, Jr., MD, FACS  
Robert M. Cortina, MD, FACS



1414 Medical Center Drive  
Wilmington, NC 28401  
[www.wilmingtonsurgical.com](http://www.wilmingtonsurgical.com)

**910.763.7363**  
**910.251.8296 fax**

### Hours

Monday through Friday  
8:00am-5:00pm

Vascular studies scheduled  
8:00am-4:30pm



## Wilmington Vascular Center

at Wilmington Surgical Associates



James R. Morgan, MS, RVT  
*Technical Director*

Susan Shaw, RDMS, RVT

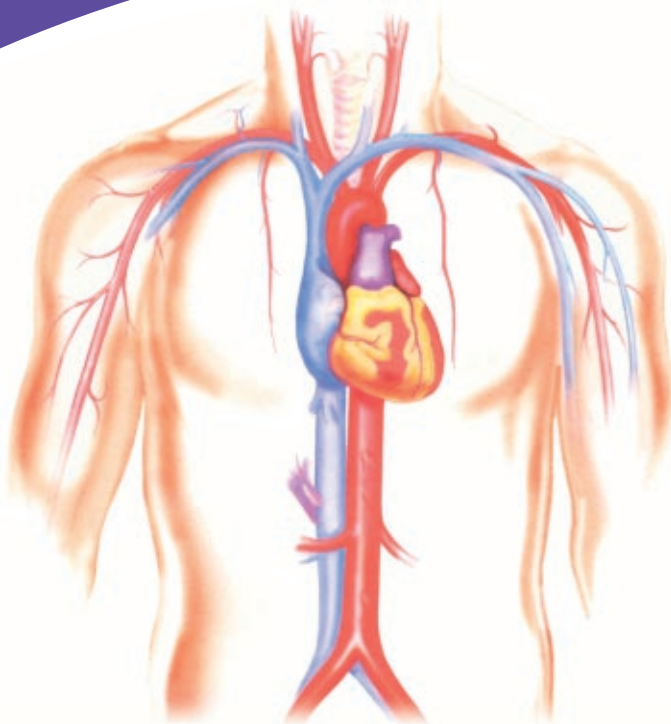
Kellee Yusko, RDMS, RVT

Kelley Garst, RT(R), RVT

To test, detect, and assess ...  
**When you need RESULTS.**

# The best ...

Our vascular team, with more than 40 years cumulative experience, is among the most skilled in the region. Technical Director James R. Morgan was the first person to perform Venous Duplex scans in southeastern NC, and teaches at Wake Forest's Center for Medical Ultrasound. Jim, along with his staff of registered vascular technologists, are the region's best for vascular testing and screening.



## The logical choice ...

Wilmington Vascular Center offers a full range of non-invasive vascular testing and screening for peripheral arterial and venous disease, always with our patients' well-being our first priority.

**Results faxed immediately**  
*WSA physicians available for consultation*

## NON-INVASIVE TESTS

### Venous Disease

- Venous Duplex for DVT
- Venous Duplex for Venous Insufficiency
- Venous Closure® for Varicose Veins

### Peripheral Arterial Disease

- Arterial Duplex Scan
- Segmental Pressures and Waveforms
- Treadmill Exercise Testing

### Cerebrovascular Disease

- Carotid Duplex Scan

### Upper Extremity Ischemia or Vasospasm

- Subclavian Duplex Scan
- Segmental Pressures and Waveforms
- Digital Plethysmography

### Aneurysmal Disease

- Abdominal Aortic Ultra Sound
- Peripheral Ultrasound

### Renal and Mesenteric Arterial Disease

- Renal Arterial Duplex
- Mesenteric Arterial Duplex